



# University Hall

---

Building Specific Fire Safety Information

# Life Safety Systems



Typical Suite Smoke Detector



Typical Building Fire Alarm  
Smoke Detector



Fire Sprinkler



Evacuation Alarm

## University Hall is equipped with:

- Fire Detection
  - All Common areas, Hallways, and Mechanical rooms are equipped with Building Fire Alarms that are monitored by Public Safety.
  - Each Residential Suite is equipped with smoke detectors that will only sound in that Suite and are monitored by Public Safety.
- Fire Sprinklers
- Evacuation Alarms

# Life Safety Systems



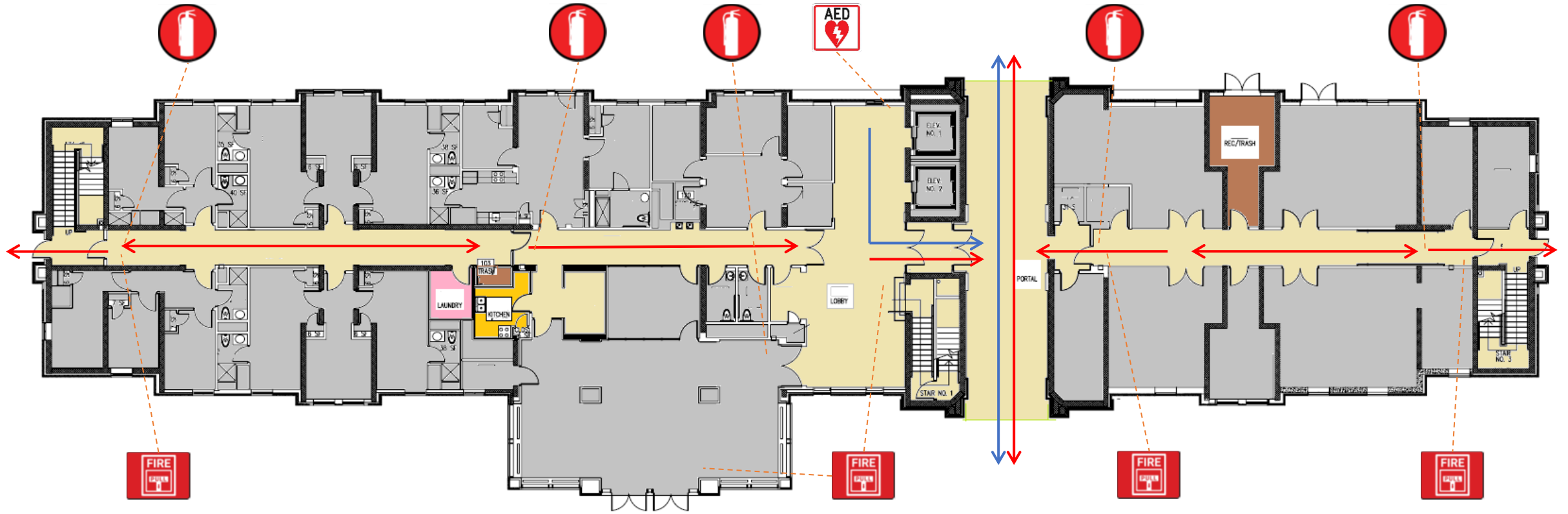
## University Hall is equipped with:

- Public Address System that alerts all areas of the building
- Emergency Call boxes/Buttons in Elevators that contact Public Safety Dispatcher
- AED in the First Floor Lobby

# Fire Safety Maps

Maps of relevant Fire safety equipment, Evacuation routes, and Areas of Rescue Assistance

# UNIVERSITY HALL FIRST FLOOR



## LEGEND



- FIRE EXTINGUISHER

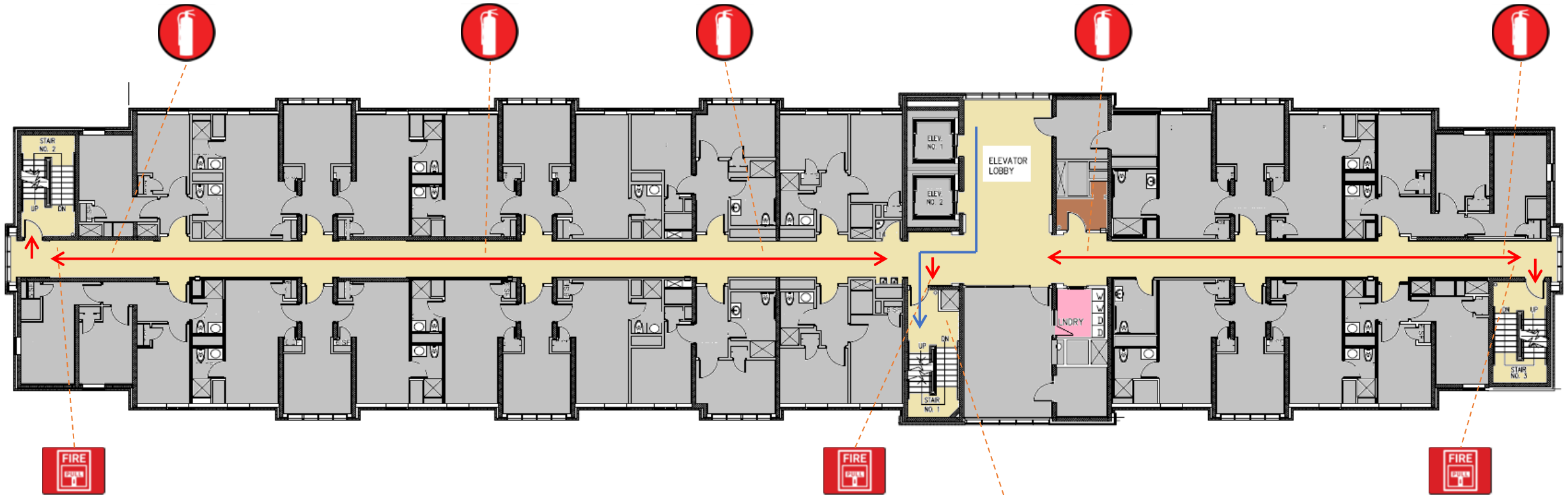


- ALARM PULL STATION



-A.E.D.

# UNIVERSITY HALL SECOND - SEVENTH FLOOR



## LEGEND



- FIRE EXTINGUISHER



- ALARM PULL STATION



- Area of Rescue Assistance



AREA OF  
RESCUE  
ASSISTANCE



# Designated Meeting Place

On the Patio between University Hall and the Commons

Be aware the extra wide sidewalks are Emergency Access Lanes

Line up by floor

Listen to Public Safety and Resident Life Staff for instructions



Commons



West Chester  
Borough

1-12-243  
36.67 AC.

University Hall

Commonwealth

Brandywine Hall

Allegheny Hall

Wayne Hall

Schmidt

S New ST



# Reporting a Fire

If you discover smoke or flame, immediately initiate the following actions:

- Activate the fire alarm system by pulling a manual pull station or verbally notify the building's occupants of the fire if the alarm system is not functioning.
- Evacuate from the building and report to the Designated Meeting Location and await further instruction from a Public Safety representative.
- Even if the fire alarm system has already been activated, (at safe distance from the fire) contact the Public Safety Department at 610-436-3311 to report the fire.





- Dorm rooms/Suites in Residence Halls are equipped with a smoke detectors that sound in that Dorm Room/Suite only.
- The Building Fire Alarm will not sound until the sprinkler head is activated or the detector in the hallway is activated.
- Report all Dorm rooms/Suites smoke alarms to Public Safety at 610-436-3311

Evacuation by Fire Alarm

Dorm room/ Suite



If you are in a Dorm room/Suite when this alarm activates:

- Evacuate to the main lobby, Close door upon exiting.
- If an actual fire is discovered in the location, activate the fire alarm system at a pull station while exiting.
- Contact Public Safety Officer in the lobby or Call ext. 3311 or (610) 436-3311
- Wait there until Public Safety assists you

Evacuation by Fire Alarm

Dorm room/ Suite



If the building fire alarm activates:

- When the building fire evacuation alarm sounds, **all occupants** are required to **evacuate immediately** by using the closest available exit point. Evacuations should be conducted in a calm and orderly manner.
- When evacuating the building, only take essential belongings. This includes items such as keys, WCU ID, wallets, purses, **coats**, medications, etc.
- When evacuating the building, remember to turn off lights and close doors to rooms as you leave.

Evacuation by Fire Alarm

**Building Fire Alarm**



- While evacuating remind others to leave the building and ask if they need assistance. If you are unable to assist or they are unwilling to evacuate; continue evacuating yourself and notify Public Safety of their location.
- Proceed to the Designated Meeting Location and stay there
- Upon receiving an “ALL CLEAR” from Public Safety, staff will assist occupants with re-entry into the building

Evacuation by Fire Alarm

**Building Fire Alarm**

# Anyone who needs assistance evacuating

- Occupants that cannot evacuate the building on their own should proceed to the closest **Area of Rescue Assistance or the landing of an enclosed stairway**
- After arriving at the **Area of Rescue Assistance or the landing of an enclosed stairway**, contact Public Safety at **(610) 436-3311** to advise them of your location
- If getting to the Area of Rescue Assistance is not possible, stay in your room with the door closed. Contact Public Safety at **(610) 436-3311** and let the dispatcher know your location
- Before an emergency, Environmental Health & Safety can help you identify egress routes, Areas of Rescue Assistance, and develop a personal evacuation plan. **(610) 436-3333**

# Additional Fire Safety Information

- Please visit [Fire Safety page on WCUPA.EDU](#)
- If you have questions or concerns; Contact **Environmental Health & Safety at 610-436-3333**



*Environmental  
Health & Safety*

